



Fresno Arrival (KFAT) Part 2

Route of 462: LMM UT4 TIJ J1 LAX J5 EHF TTE ALTTA8

Fresno Approach

462: Fresno Approach, good evening, 462 out of 12,300 for 11,000 information Quebec

1. Fresno Approach: 462, Fresno Approach, good evening, _____
from ALTTA _____
2. Fresno Approach: [call sign unknown] 630
_____?

630: sorry I drifted. I'll head heading 150 right now

3. Fresno Approach: 630 _____

4. Fresno Approach: 630 _____

Skywest 3490: Fresno Approach, Skywest 3490 is 11,000 with arrival Quebec with the field insight

5. Fresno Approach: Skywest 3490, Fresno Approach, good evening, _____
6. Fresno Approach: 630 _____
7. Fresno Approach: Skywest 3490 _____
8. Fresno Approach: Attention _____

9. Fresno Approach: Skywest 3490, _____

Skywest 3490: Skywest 3490 has Aeromexico insight

10. Fresno Approach: Skywest 3490, _____

Skywest 3490: cleared visual approach 29R behind the 7-3



11. Fresno Approach: 462 _____

Fresno Tower

462: Fresno Tower, it's 462 ILS runway 29R

12. Fresno Tower: 462, Fresno Tower, _____

630: Fresno Tower, 630, request short approach and long landing

13. Fresno Tower: 630, _____

Skywest 3490: Fresno Tower, Skywest 3490, on the visual 29R

14. Fresno Tower: Skywest 3490, Fresno Tower, good evening,

15. Fresno Tower: 630 _____ to Mazzei (FBO)

16. Fresno Tower: 462 _____

17. Fresno Tower: Skywest 3490 _____

Skywest Maintenance 629BR: Tower, Skywest Maintenance 629BR at the terminal, would like to taxi to the hangar

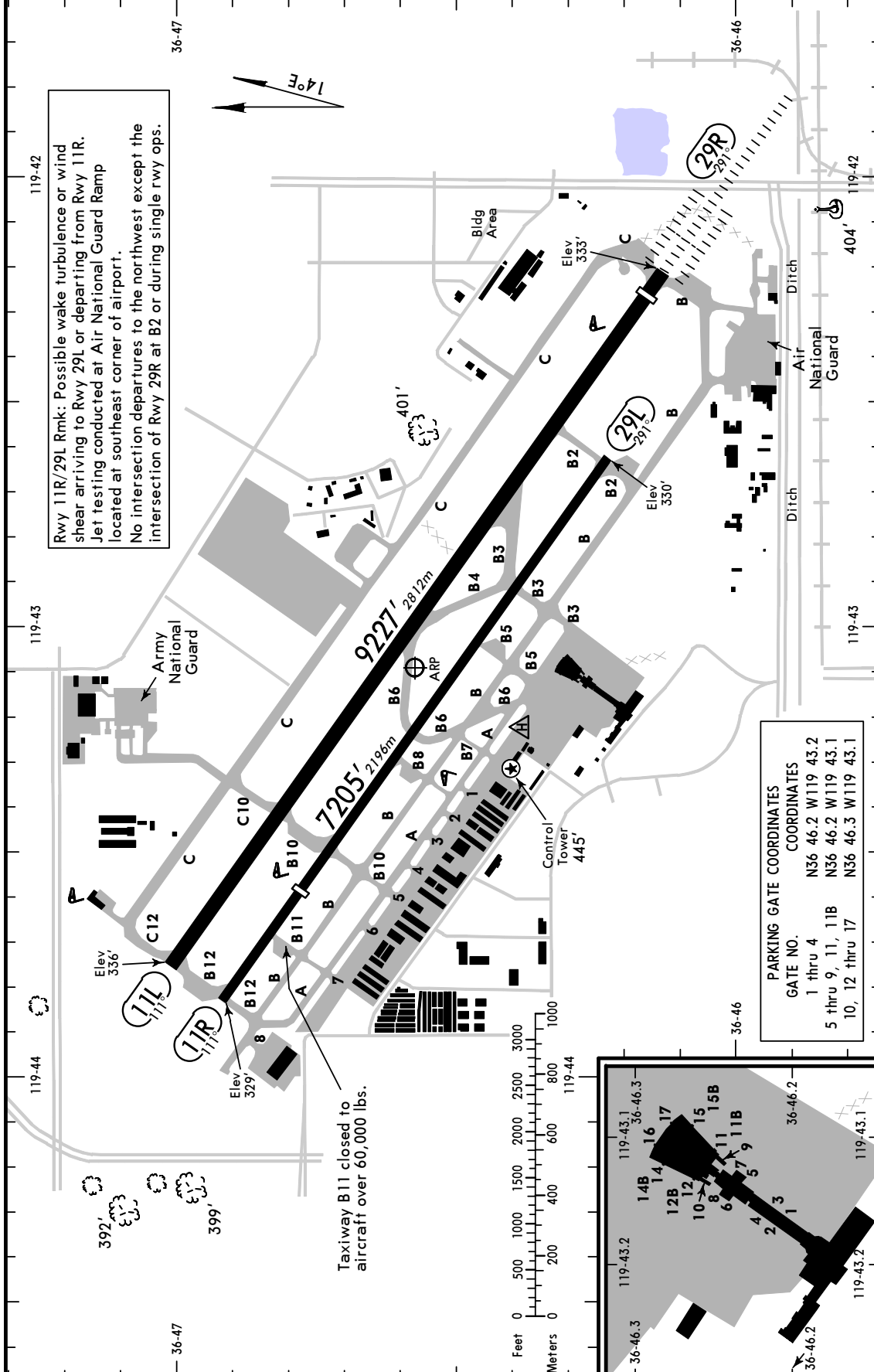
18. Fresno Tower: Skywest Maintenance 629BR, Fresno Tower,



#19 SELF Exercise

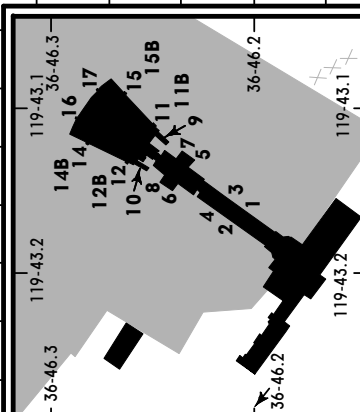
ATIS	FRESNO Clearance	Ground	Tower	FRESNO Departure (R)
121.35	124.35	121.7	118.2	240°-090° 091°-239°
				119.6 132.35

Rwy 11R/29L Rmk: Possible wake turbulence or wind shear arriving to Rwy 29L or departing from Rwy 11R. Jet testing conducted at Air National Guard Ramp located at southeast corner of airport. No intersection departures to the northwest except the intersection of Rwy 29R at B2 or during single rwy ops.

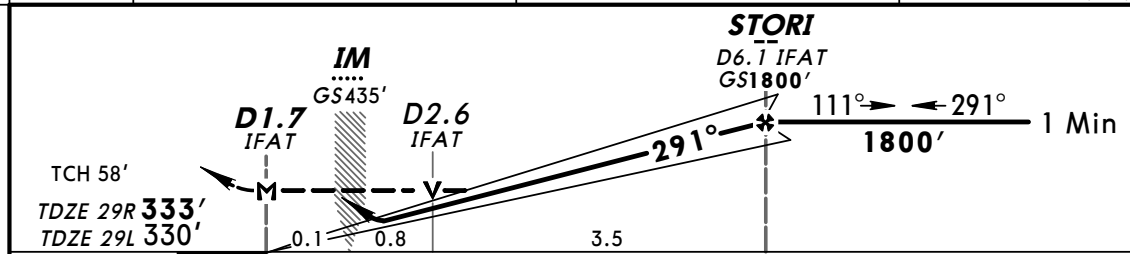
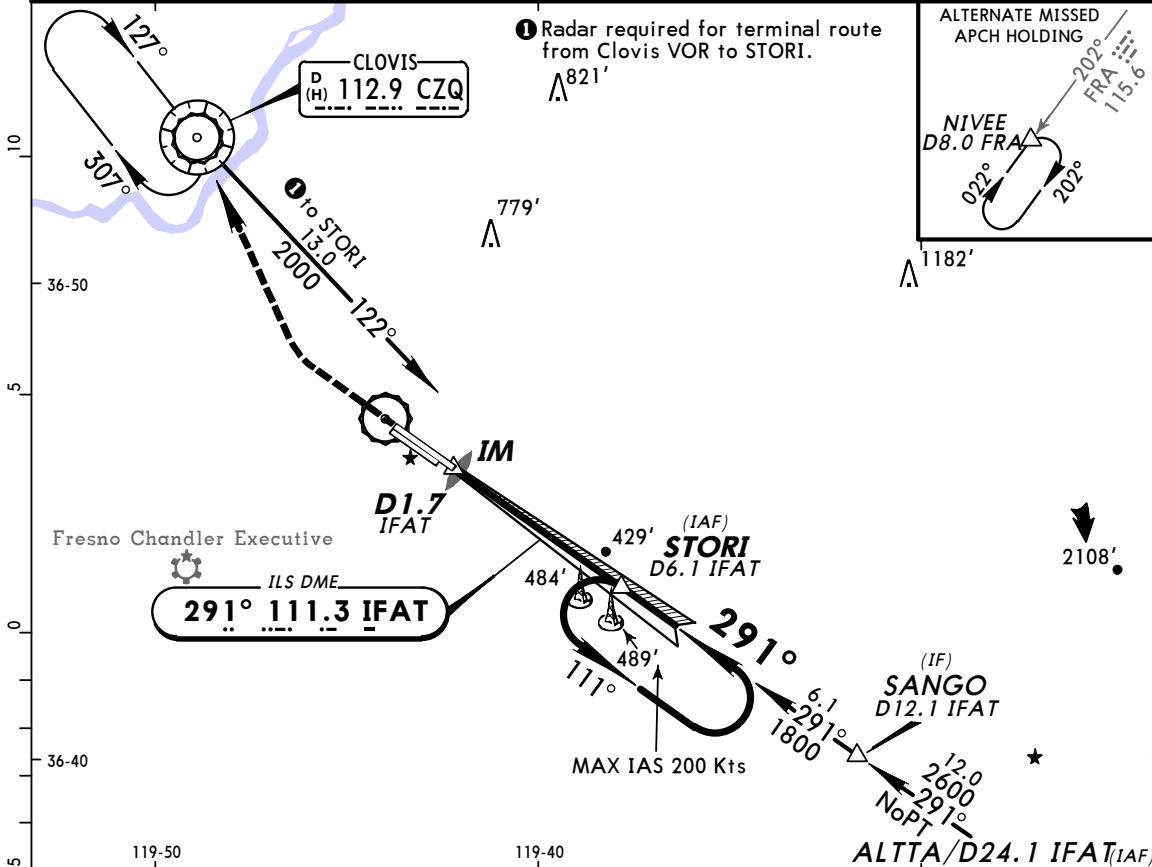


PARKING GATE COORDINATES

GATE NO.	COORDINATES
1 thru 4	N36 46.2 W119 43.2
5 thru 9, 11, 11B	N36 46.2 W119 43.1
10, 12 thru 17	N36 46.3 W119 43.1



ATIS 121.35		FRESNO Approach (R) 119.6		FRESNO Tower 118.2		Ground 121.7	
LOC IFAT 111.3	Final Apch Crs 291°	GS STORI 1800' (1467')	ILS DA(H) 533' (200')	Apt Elev 336' TDZE 29R 333'			
MISSED APCH: Climb to 800' then climbing RIGHT turn to 2000' direct CZQ VOR and hold.							
Alt Set: INCHES		Trans level: FL 180		Trans alt: 18000'		MSA CZQ VOR	
1. DME required. 2. VGSI and ILS glidepath not coincident.							



Gnd speed-Kts	70	90	100	120	140	160	ALSF-II PAPI	800'	2000'	D	CZQ 112.9
GS	3.00°	377	484	538	646	753					
MAP at D1.7 IFAT											

	STRAIGHT-IN LANDING RWY 29R			LOC (GS out)		SIDESTEP LANDING RWY 29L	CIRCLE-TO-LAND	
	ILS DA(H) 533' (200')		MDA(H) 680' (347')		MDA(H) 740' (410')		Max Kts	MDA(H)
	FULL	TDZ or CL out	ALS out	ALS out				
A								
B	RVR 18 or 1/2	RVR 24 or 1/2	RVR 40 or 3/4	RVR 24 or 1/2	RVR 50 or 1	1	90	820'(484')-1
C						1 1/2	140	820'(484')-1 1/2
D				RVR 40 or 3/4	RVR 60 or 1/4	2	165	920'(584')-2