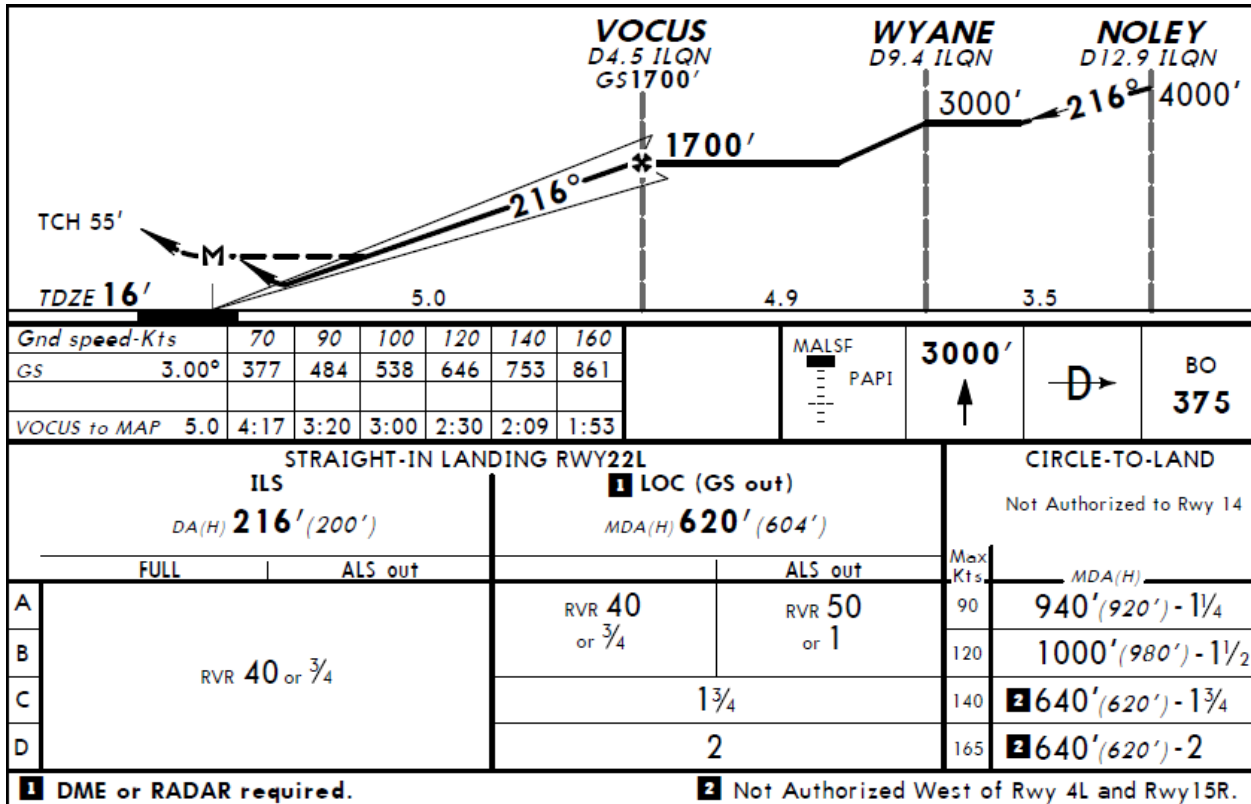


## Boston Tower (KBOS) Low Visibility

KBOS 252025Z 09004KT 1 1/4SM R04R/2600V5000FT BR BKN001 BKN028 OVC120 12/11  
A2991 RMK AO2 TWR VIS 1 1/2 VIS 1/4 E

Abbreviations: Tower (TWR)



1. Boston TWR: November 71R \_\_\_\_\_

United 578: Tower United 578 VOCUS

2. Boston TWR: United 578 \_\_\_\_\_

3. Boston TWR: November 71R \_\_\_\_\_

4. Boston TWR: ComAir 335 \_\_\_\_\_

5. Boston TWR: American 1431, Boston Tower, \_\_\_\_\_

---

6. Boston TWR: November 7AF \_\_\_\_\_

*November 7AF: We have Foxtrot*

7. Boston TWR: November 7AF \_\_\_\_\_

8. Boston TWR: American 1431 \_\_\_\_\_

9. Boston TWR: November 7AF \_\_\_\_\_

*American 880: and American 880 ILS 22L*

10. Boston TWR: American 1431 \_\_\_\_\_

*American 880: and American 880 ILS 22L*

11. Boston TWR: American 880, Boston Tower, \_\_\_\_\_

---

12. Boston TWR: United 578 \_\_\_\_\_

13. Boston TWR: Delta 1523, Boston Tower \_\_\_\_\_

*Delta 2100: Tower, Delta 2100 we are VOCUS inbound 22L*

14. Boston TWR: Delta 2100, Boston Tower \_\_\_\_\_

---

15. Boston TWR: Delta 1523, \_\_\_\_\_

16. Boston TWR: Citrus 737, Boston Tower, \_\_\_\_\_

17. Boston TWR: American 880 \_\_\_\_\_

18. Boston TWR: American 880 \_\_\_\_\_

19. Boston TWR: Delta 1523 \_\_\_\_\_

20. Boston TWR: Citrus 737, \_\_\_\_\_  
\_\_\_\_\_

21. Boston TWR: ComAir 291, Boston Tower, \_\_\_\_\_  
\_\_\_\_\_

*Delta 1492: Tower, Delta 1492 with you, ILS 22L*

22. Boston TWR: Delta 1492, Boston Tower, \_\_\_\_\_  
\_\_\_\_\_

23. Boston TWR: Delta 2100 \_\_\_\_\_

*Delta 2100: we just passed it*

24. Boston TWR: Delta 2100 \_\_\_\_\_

25. Boston TWR: Citrus 737 \_\_\_\_\_

26. Boston TWR: Delta 2100 keep your time [unintelligible] \_\_\_\_\_  
\_\_\_\_\_

27. Boston TWR: Delta 2100 \_\_\_\_\_

28. Boston TWR: Wisconsin 3654?

*Wisconsin 3654: just checking on, just inside of VOCUS, Wisconsin 3654*

29. Boston TWR: Wisconsin 3654, Boston Tower, \_\_\_\_\_  
\_\_\_\_\_

30. Boston TWR: ComAir 291 \_\_\_\_\_

31. Boston TWR: JetBlue 471 Boston Tower, \_\_\_\_\_

32. Boston TWR: Delta 1492 \_\_\_\_\_

*Delta 1492: Echo and Papa hold short of 22R*

33. Boston TWR: Delta 1492 \_\_\_\_\_

34. Boston TWR: Delta 1492 \_\_\_\_\_

35. Boston TWR: ComAir 291 \_\_\_\_\_

36. Boston TWR: JetBlue 471 \_\_\_\_\_

37. Boston TWR: Cactus 752, Boston Tower, \_\_\_\_\_

38. Boston TWR: Wisconsin 3654 \_\_\_\_\_

39. Boston TWR: Cair 2331?

*Cair 2331: Tower, Cair 2331 with you localizer 22L*

40. Boston TWR: Cair 2331, Boston Tower, \_\_\_\_\_

41. Boston TWR: Wisconsin 3654 \_\_\_\_\_

42. Boston TWR: JetBlue 471 \_\_\_\_\_

43. Boston TWR: Cair 2331 \_\_\_\_\_

*Cair 2331: lights insight for 2331*

44. Boston TWR: Cactus 752 \_\_\_\_\_

45. Boston TWR: ComAir 665, Boston Tower \_\_\_\_\_

*United 172: Tower, United 172 is with you on the ILS runway 22L [blocked]*

46. Boston TWR: United 172, Boston Tower, \_\_\_\_\_

\_\_\_\_\_