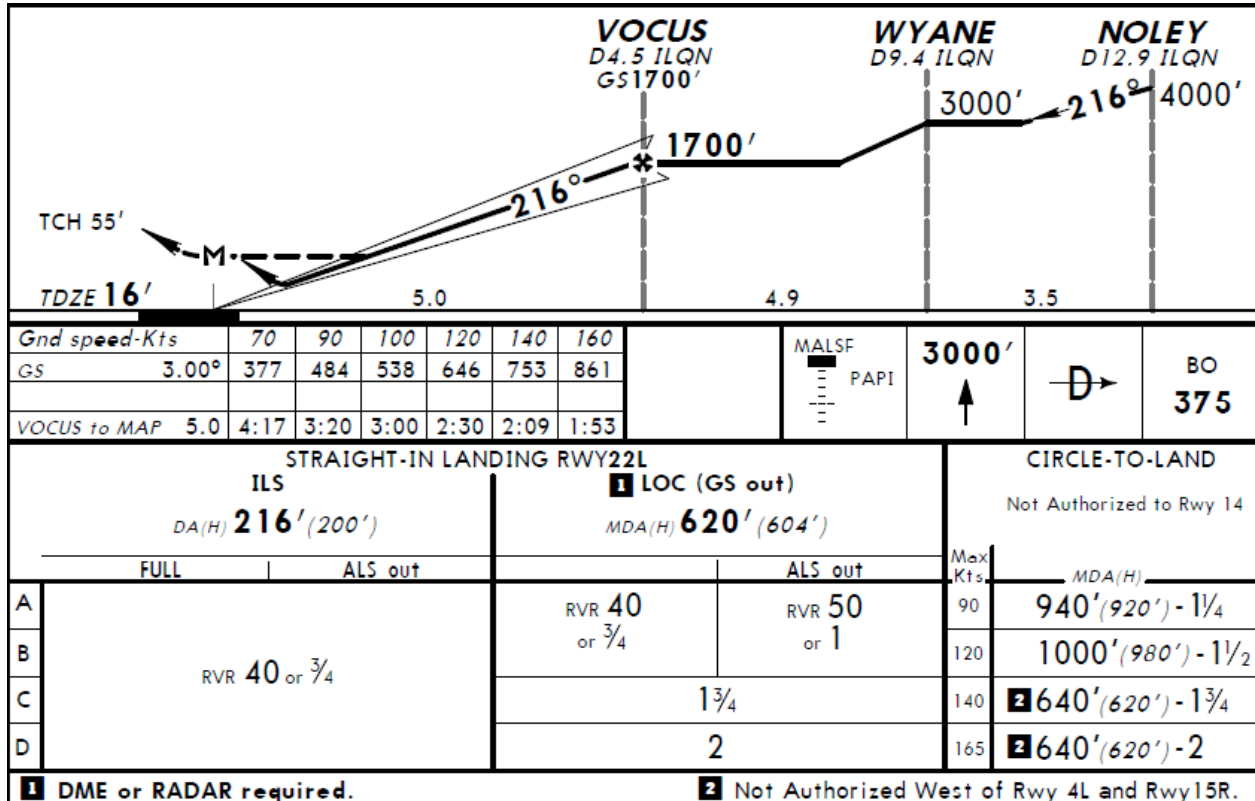




Boston Tower (KBOS) Low Visibility

KBOS 252025Z 09004KT 1 1/4SM R04R/2600V5000FT BR BKN001 BKN028 OVC120 12/11
A2991 RMK AO2 TWR VIS 1 1/2 VIS 1/4 E

Abbreviations: Tower (TWR)



1. Boston TWR: November 71R turn right on Charlie hold short of 22R

United 578: Tower United 578 VOCUS

2. Boston TWR: United 578 runway 22L RVR touchdown 6500 mid 1,600 rollout 2,000 runway 22L cleared to land.

3. Boston TWR: November 71R cross runway 22R then contact ground, traffic will hold in position

Suggested Read Back: cross runway 22R then ground, call sign.

4. Boston TWR: ComAir 335 contact Boston departure



5. Boston TWR: American 1431, Boston Tower, runway 22R line up and wait, runway 22R RVR touchdown 6500 rollout 2,400

Suggested Read Back: 22R line up and wait, call sign.

6. Boston TWR: November 7AF turn right on...via Foxtrot

November 7AF: We have Foxtrot

7. Boston TWR: November 7AF turn right on Foxtrot hold short of 22R

8. Boston TWR: American 1431 runway 22R you are cleared for takeoff

Suggested Read Back: runway 22R cleared for takeoff, call sign.

9. Boston TWR: November 7AF cross runway 22R then contact ground

American 880: and American 880 ILS 22L

10. Boston TWR: American 1431 contact Boston departure

American 880: and American 880 ILS 22L

11. Boston TWR: American 880, Boston Tower, caution wake turbulence previous arrival Boeing 757 runway 22L RVR touchdown 6500 mid 1,400 rollout 3,000 runway 22L cleared to land.

12. Boston TWR: United 578 on Echo cross runway 22R then contact ground

Suggested Read Back: cross runway 22R on Echo then ground, call sign.

13. Boston TWR: Delta 1523, Boston Tower runway 22R line up and wait traffic crossing downfield

Delta 2100: Tower, Delta 2100 we are VOCUS inbound 22L

14. Boston TWR: Delta 2100, Boston Tower runway 22L RVR touchdown more than 6000 mid 1,200 rollout 1,400 runway 22L cleared to land.

Suggested Read Back: cleared to land, call sign.



#7 TWR Transcript

15. Boston TWR: Delta 1523, runway 22R RVR touchdown 6500 rollout 3000
runway 22R cleared for takeoff
 16. Boston TWR: Citrus 737, Boston Tower, runway 22R line up and wait traffic
crossing downfield
 17. Boston TWR: American 880 turn right on Echo and hold short of runway 22R
 18. Boston TWR: American 880 cross runway 22R then contact ground, traffic is
going to hold in position for you
 19. Boston TWR: Delta 1523 contact Boston Departure
 20. Boston TWR: Citrus 737, runway 22R RVR touchdown more than 6,000
rollout 3,000 runway 22R you are cleared for takeoff
 21. Boston TWR: ComAir 291, Boston Tower, runway 22R RVR touchdown more
than 6,000 rollout 3,000 line up and wait traffic will cross downfield
- Delta 1492: Tower, Delta 1492 with you, ILS 22L*
22. Boston TWR: Delta 1492, Boston Tower, caution wake turbulence previous
arrival was a Boeing 757 runway 22L RVR touchdown 6500 mid 1,200 rollout
2,800 runway 22L cleared to land.
 23. Boston TWR: Delta 2100 do you have runway 27
- Delta 2100: we just passed it*
24. Boston TWR: Delta 2100 turn right on 9, go down on Bravo turn right on
Bravo and hold short of runway 4L approach
- Suggested Read Back: right on ninner, right on Bravo hold short of 4L, call sign.
25. Boston TWR: Citrus 737 contact Boston departure



#7 TWR Transcript

26. Boston TWR: Delta 2100 keep your time [unintelligible] cross the runway
4L approach traffic is holding in position for you

27. Boston TWR: Delta 2100 as you pass taxiway Juliet contact ground

28. Boston TWR: Wisconsin 3654?

Wisconsin 3654: just checking on, just inside of VOCUS, Wisconsin 3654

29. Boston TWR: Wisconsin 3654, Boston Tower, runway 22L RVR touchdown
6000 mid 1,400 rollout 2,400 runway 22L cleared to land.

30. Boston TWR: ComAir 291 runway 22R is cleared for takeoff

31. Boston TWR: JetBlue 471 Boston Tower, runway 22R RVR touchdown more
than 6000 rollout 1800 line up and wait

32. Boston TWR: Delta 1492 turn right on Echo and hold short of 22R, if you
have Papa, turn right Papa and Echo hold short of 22R

Suggested Read Back: we are on Papa, continue Papa Echo and hold short of 22R.

Delta 1492: Echo and Papa hold short of 22R

33. Boston TWR: Delta 1492 you are on Papa, Papa Echo and hold short of
runway 22R

34. Boston TWR: Delta 1492 give me a good rate of cross runway 22R traffic
holding in position for you and then contact Ground

35. Boston TWR: ComAir 291 contact Boston Departure good day

36. Boston TWR: JetBlue 471 cleared for takeoff



#7 TWR Transcript

37. Boston TWR: Cactus 752, Boston Tower, runway 22R line up and wait runway 22R RVR 6000 rollout 2200

38. Boston TWR: Wisconsin 3654 on Echo hold short of 22R

39. Boston TWR: Cair 2331?

Cair 2331: Tower, Cair 2331 with you localizer 22L

40. Boston TWR: Cair 2331, Boston Tower, runway 22L RVR touchdown 6000 mid 1,400 rollout 2,200 caution wake turbulence previous arrival RJ, runway 22L you are cleared to land.

41. Boston TWR: Wisconsin 3654 cross 22R then contact ground traffic is holding in position

42. Boston TWR: JetBlue 471 contact Boston Departure good day

43. Boston TWR: Cair 2331 let me know when you have the lights of the runway 22L insight

Cair 2331: lights insight for 2331

44. Boston TWR: Cactus 752 runway 22R cleared for takeoff no delay on the roll please

45. Boston TWR: ComAir 665, Boston Tower runway 22R line up and wait runway 22R RVR 6000 rollout 1,800

United 172: Tower, United 172 is with you on the ILS runway 22L [blocked]

46. Boston TWR: United 172, Boston Tower, runway 22L RVR touchdown more than 6000 mid 1,400 rollout 1,800 runway 22L cleared to land.